



FLAT DISPLAY TECHNOLOGY



This product is RoHS compliant

## BRIEF SPECIFICATION

**Fdt Tech Module No. :** EP031GY6S0-FDR

**Description:** 31.2" E-paper

**SPEC No.:** SAS-1606003

**Version:** 0.0

**Issue Date:** June 29, 2016

※ This approval sheet contains 5 pages including the cover and appendix.



## ● Features

- High contrast reflective / electrophoretic technology
- 2560 x 1440 display
- Ultra wide viewing angle
- Ultra low power consumption
- Pure reflective mode
- Bi-stable
- Commercial temperature range
- Landscape, Portrait mode

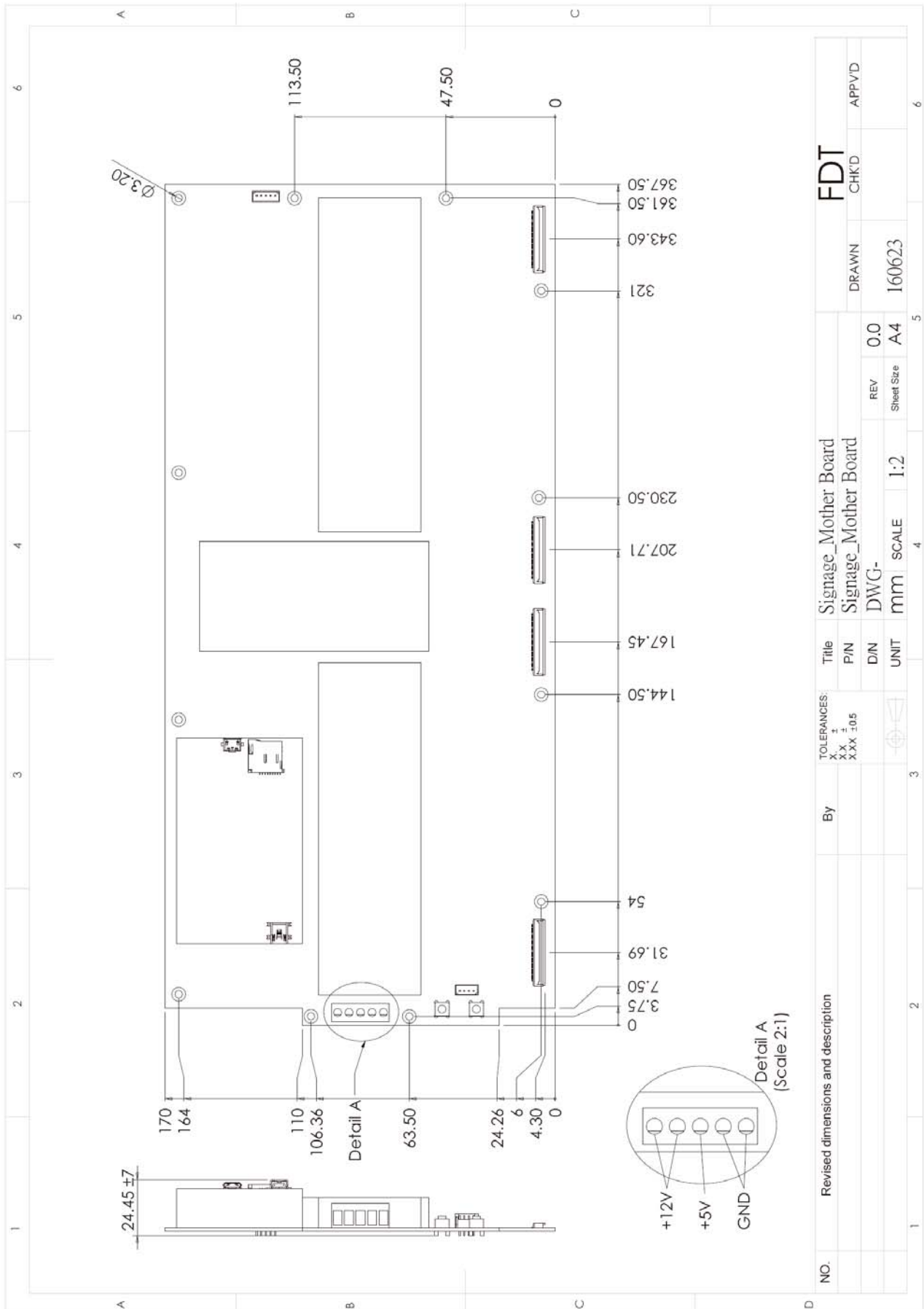
## ● Specifications

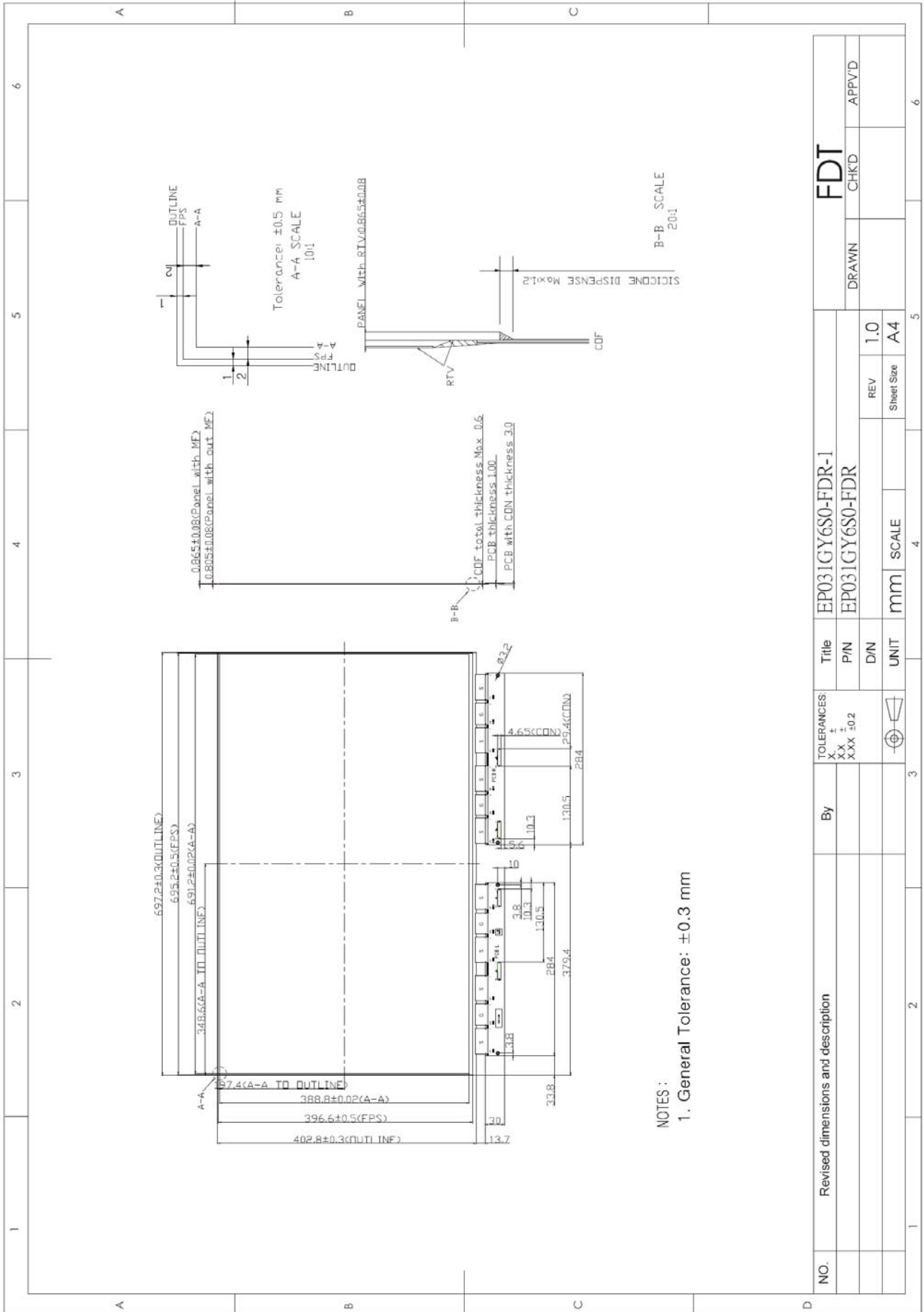
Parameter	Specifications	Unit	Remark
Screen Size	31.2(diagonal)	inch	
Display Format	2560 (H) x 1440 (V)	dot	
Active Area	697.2 (H) x 388.8 (V)	mm	
Pixel Pitch	0.27 (H) x 0.27 (V)	mm	
Pixel Configuration	Square		
Outline Dimension	697.2(W) x 402.8(H) x 0.805(D)	mm	
Weight	TBD	g	
Number of Gray	16 Gray Level (monochrome)		
Display Operating Mode	Reflective Mode		
Glass Substrate	0.5		
Surface Treatment	Hard Coating		

## ● Electrical Characteristics

Parameter	Symbol	Min	Typ	Max	Unit	Note	Remark
Input Voltage	Vcc	-	+12	-	V		
Total Current	Icc (+12V)	-	TBD	-	mA		±15%
Input Voltage	VDD	-	+5	-	V		
Total Current	IDD (+5V)	-	TBD	-	mA		±15%

## ● Dimension Information

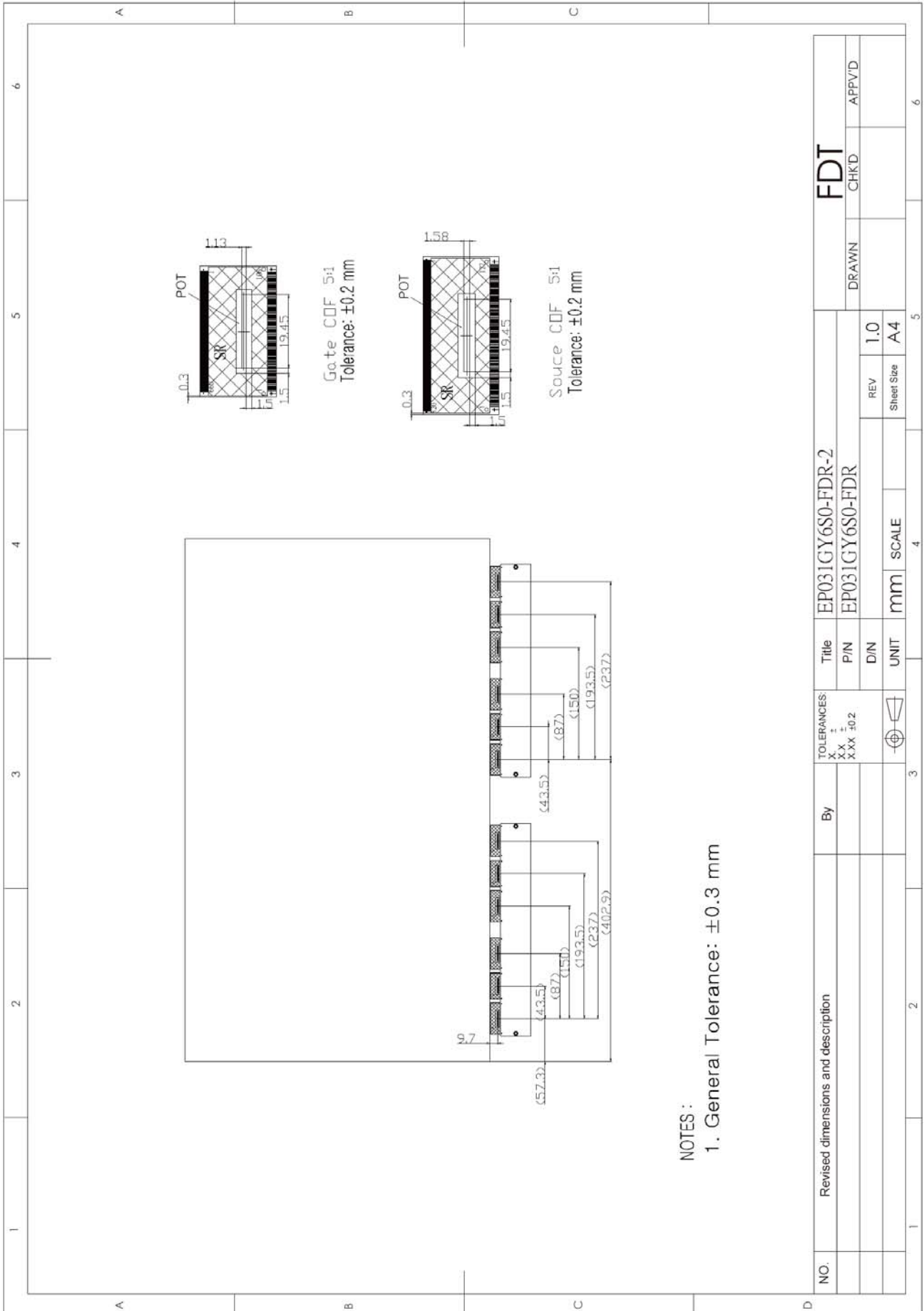




**NOTES :**

1. General Tolerance: ±0.3 mm

NO.	Revised dimensions and description	By	TOLERANCES: X.X ± X.X ± X.X ±0.2	Title	EP031GY6S0-FDR-1		FDT						
					P/N	D/N	UNIT	mm	SCALE	A4	DRAWN	CHKD	APPV'D
							REV	1.0	Sheet Size	A4			



NOTES :  
 1. General Tolerance:  $\pm 0.3$  mm

NO.	Revised dimensions and description	By	TOLERANCES: XX ± XXX ±0.2	Title		FDT	
				EP031GY6S0-FDR-2	EP031GY6S0-FDR	DRAWN	CHKD
				UNIT	mm	SCALE	
				REV	1.0	Sheet Size	A4