



FLAT DISPLAY TECHNOLOGY



This product is RoHS compliant

§ BRIEF SPECIFICATION §

FDT Tech Module No: **LOF104X150-30R**

Description: **10.4" Digital TFT- LCD Module**

SPEC No.: **SAS-1501003**

Version: **0.2**

Issue Date: **December 8, 2016**

※ This specification contains 5 pages including the cover and appendix.



Features

- Full Flat Panel Design
- 10.4" (1024x768) Digital TFT LCD
- Aspect Ratio: 4:3
- Input Signal VGA / DVI-D / HDMI 1.3a
- Maximum Support Resolution 1920x1080
- Stereo Audio Amplifier, Output 2W@4Ω Speaker
- Audio Line-In
- 5 Key Buttons Controls
- 8 Languages OSD Menu
- LED Backlight
- Wide Operation Voltage +11V ~ +28V

Applications

- Industrial
- Medical Environment
- Instrument Display
- Kiosk
- Security
- Signage
- Office Electronics
- Home Application
- Educate Application



Specifications

| LCD | |
|-----------------------------------|--------------------------------|
| Panel Size | 10.4" |
| Resolution (Pixels) | 1024x768 |
| Color | 262K |
| Luminance without PMMA | 400 cd/m ² |
| Luminance (PMMA) | 360 cd/m ² |
| Contrast Ratio | 500 |
| View Angle | 75 / 75 / 60 / 80 |
| LED Life Time | 30K (Min) |
| Power Requirement | |
| Power Input (DC Jack 2.1 ϕ) | +11V ~ +28Vdc |
| Power Consumption@+12V | 6.6 Watts (@Without Amplifier) |
| Controls | |
| Key | 5 Buttons |
| Serial Remote Control | RS232 (Option) |

| Input Signal | | |
|---|--|------------------------|
| VGA | D-Sub15 | |
| DVI | DVI-D | |
| HDMI | 1.3a | |
| Audio | | |
| Amplifier | 1W@8 Ω / 2W@4 Ω | |
| Line-In | Stereo Input Phone Jack ϕ 3.5 | |
| Mechanical | | |
| Construction | Aluminum Front Bezel with Completely Covered PMMA and SECC steel chassis | |
| Mounting Type | Panel / VESA 100 x 100 Mount | |
| Environment | | |
| Temperature Range | Operating | -10~+60 $^{\circ}$ C |
| | Storage | -20~+70 $^{\circ}$ C |
| High Temperature & High Humidity (Non-condensing) | Operating | +40 $^{\circ}$ C / 85% |

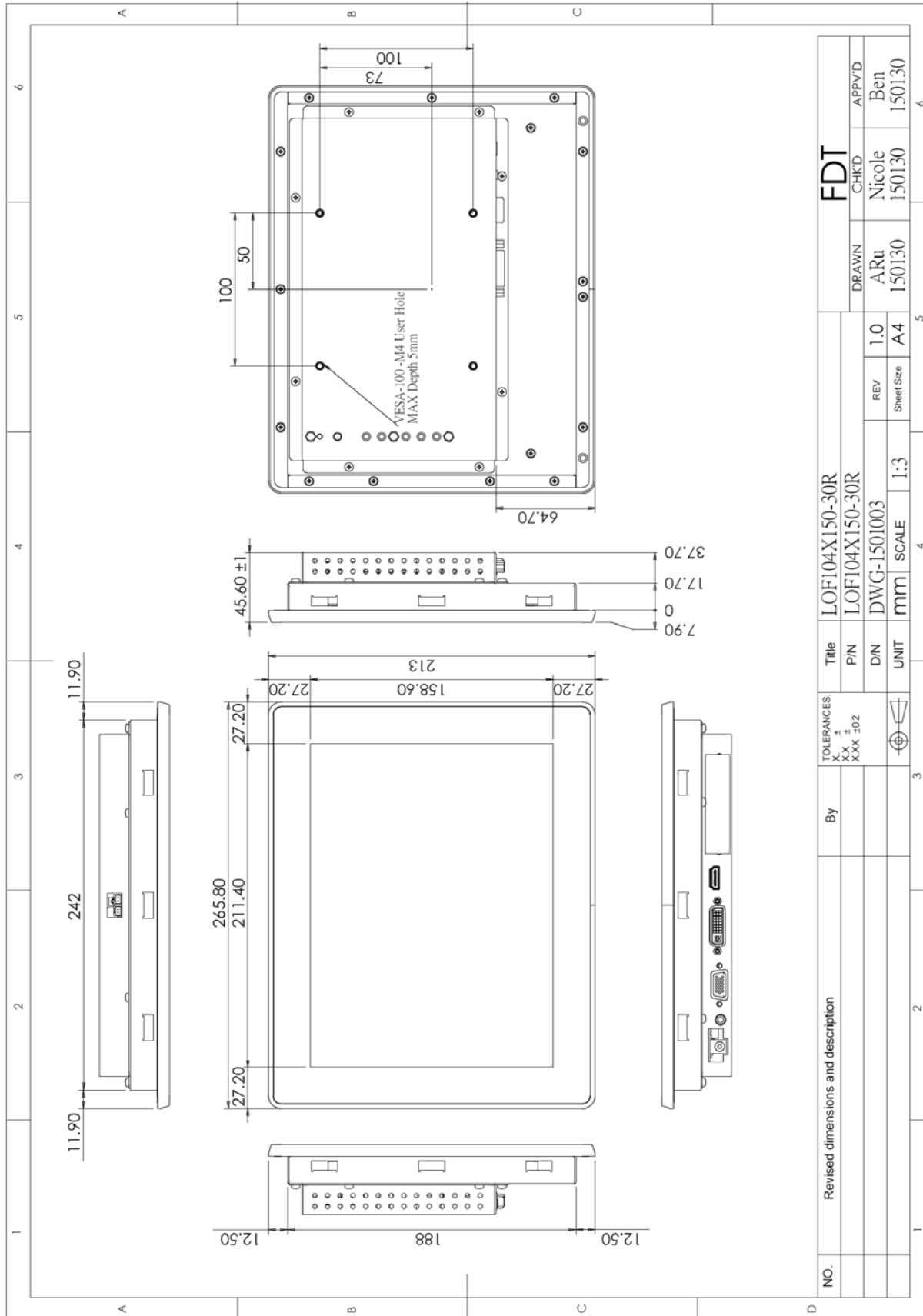
Order Information

| Parameter | LOF104X150-30R |
|-----------------|----------------|
| VGA | ⊙ |
| DVI | ⊙ |
| HDMI | ⊙ |
| Audio Amplifier | ⊙ |
| Audio Line-In | ⊙ |
| 5 Keys | ⊙ |

| Parameter | Condition |
|----------------------|--------------|
| Ear Phone | |
| RS232 Remote Control | Non-standard |
| Light Sensor | |
| Accessories (Option) | Standard |

Note: Special order condition will apply to non-standard items and pls contact salespersons in FDT.

Dimension



Accessories (Option)

Before you begin installing the Open Frame, please make sure that the following materials have been shipped:



A. LASTD12033-FDR



B. LAACD18000-FDR



C. LACABLE068-FDR



D. LACABLE069-FDR



E. LAVGA18000-FDR



F. LACABLE070-FDR



G. LASPKR0004-FDR



H. LASCW00003-FDR

- A. AC to DC Adapter (L:1500mm,100-240V_{AC} 50-60Hz to +12V_{DC} @ 3.3A, ϕ 2.1)
- B. Power Cord (L:1800mm, Plug Type B for USA)
- C. HDMI Cable (L:1800mm)
- D. DVI Cable (L:1800mm)
- E. VGA Cable (L:1800mm)
- F. AUDIO Cable (L:1800mm)
- G. Speaker (2.5W @ 4 Ω L:400mm *2 Pieces)
- H. Mount Clamp and Screw *12 Pieces