



FLAT DISPLAY TECHNOLOGY



This product is RoHS compliant

§ BRIEF SPECIFICATION §

FDT Tech Module No: **LOF104X150-30R**

Description: **10.4" Digital TFT- LCD Module**

SPEC No.: **SAS-1501003**

Version: **1.0**

Issue Date: **February 14, 2020**

※ This specification contains 5 pages including the cover and appendix.



Features

- Full Flat Panel Design
- 10.4" (1024x768) Digital TFT LCD
- Aspect Ratio: 4:3
- Input Signal VGA / DVI-D / HDMI 1.3a
- Maximum Support Resolution 1920x1080
- Stereo Audio Amplifier, Output 2W@4Ω Speaker
- Audio Line-In
- 5 Key Buttons Controls
- 8 Languages OSD Menu
- LED Backlight
- Wide Operation Voltage +11V ~ +28V

Applications

- Industrial
- Medical Environment
- Instrument Display
- Kiosk
- Security
- Signage
- Office Electronics
- Home Application
- Educate Application



Specifications

LCD	
Panel Size	10.4"
Resolution (Pixels)	1024x768
Color	262K
Luminance without PMMA	400 cd/m ²
Luminance (PMMA)	360 cd/m ²
Contrast Ratio	500
View Angle	75(L) / 75(R) / 60(T) / 80(B)
LED Life Time	30K (Min)
Power Requirement	
Power Input (DC Jack 2.1 φ)	+11V ~ +28Vdc
Power Consumption@+12V	6.6 Watts (@Without Amplifier)
Controls	
Key	5 Buttons
Serial Remote Control	RS232 (Option)

Input Signal		
VGA	D-Sub15	
DVI	DVI-D	
HDMI	1.3a	
Audio		
Amplifier	1W@8Ω / 2W@4Ω	
Line-In	Stereo Input Phone Jack φ 3.5	
Mechanical		
Construction	Aluminum Front Bezel with Completely Covered PMMA and SECC steel chassis	
Mounting Type	Panel / VESA 100 x 100 Mount	
Environment		
Temperature Range	Operating	-10~+60°C
	Storage	-20~+70°C
High Temperature & High Humidity (Non-condensing)	Operating	+40°C / 85%

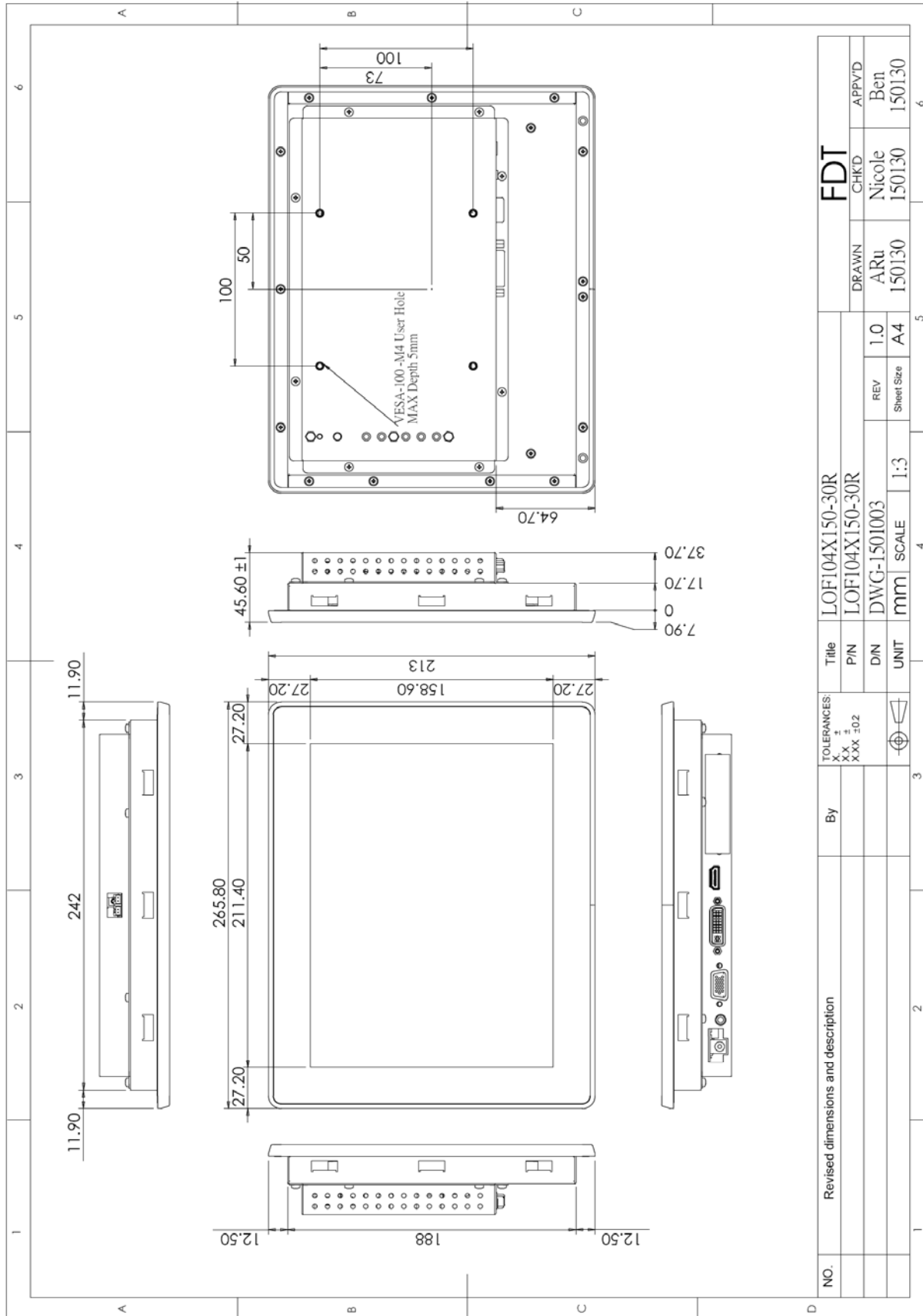
Order Information

Item	LOF104X150-30R
VGA	⊙
DVI	⊙
HDMI	⊙
Audio Amplifier	⊙
Audio Line-In	⊙
5 Keys	⊙

Item	Condition
Ear Phone	
RS232 Remote Control	Customized
Light Sensor	

Note: Special order condition will apply to non-standard items and pls contact salespersons in FDT.

Dimension



Accessories (Option)

Before you begin installing the Open Frame, please make sure that the following materials have been shipped:



A. **LASTD12033-FDR**



B. **LAACD18000-FDR**



C. **LACABLE068-FDR**



D. **LACABLE069-FDR**



E. **LAVGA18000-FDR**



F. **LACABLE070-FDR**



G. **LASPKR0004-FDR**



H. **LASCW00003-FDR**

- A. AC to DC Adapter (L:1500mm,100-240V_{AC} 50-60Hz to +12V_{DC} @ 3.3A, ϕ 2.1)
- B. Power Cord (L:1800mm, Plug Type B for USA)
- C. HDMI Cable (L:1800mm)
- D. DVI Cable (L:1800mm)
- E. VGA Cable (L:1800mm)
- F. AUDIO Cable (L:1800mm)
- G. Speaker (2.5W @ 4 Ω L:400mm *2 Pieces)
- H. Mount Clamp and Screw *12 Pieces